

Belmont Abbey College
Information Technology Department

Accessing Belmont Abbey Files and Applications Remotely

Point your web browser to <https://desktop.bac.edu/rdweb>. A login page will appear as shown below.

Sign in using your Belmont Abbey Account prefixed by BACNET\. For instance, a username of JohnQPublic would sign in using BACNET\johnqpublic. Make sure the “This is a public or shared computer” option is checked as shown below.



Domain\user name: ×
Password:

Security ([show explanation](#))

- This is a public or shared computer
- This is a private computer

A message may appear showing that ActiveX is not enabled. This is normal and will not impact your capabilities. This is simply used to display icons on the next screen. If at any point a dialog box displays asking for “RD Gateway Credentials”, re-enter the login and password. This is normal for remote computers.

If ActiveX is enabled you will see the screen below showing the applications you have access to remotely. If an earlier screen showed that ActiveX was not enabled, you may not see the icons but the wording for the icons will still be displayed.



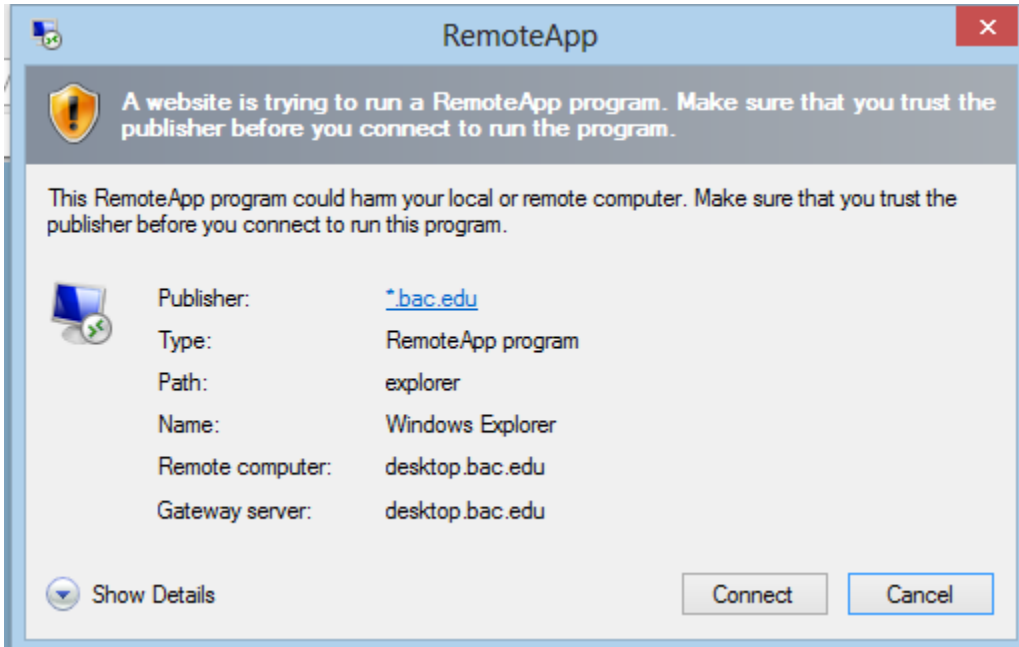
RemoteApp Programs | **Remote Desktop**



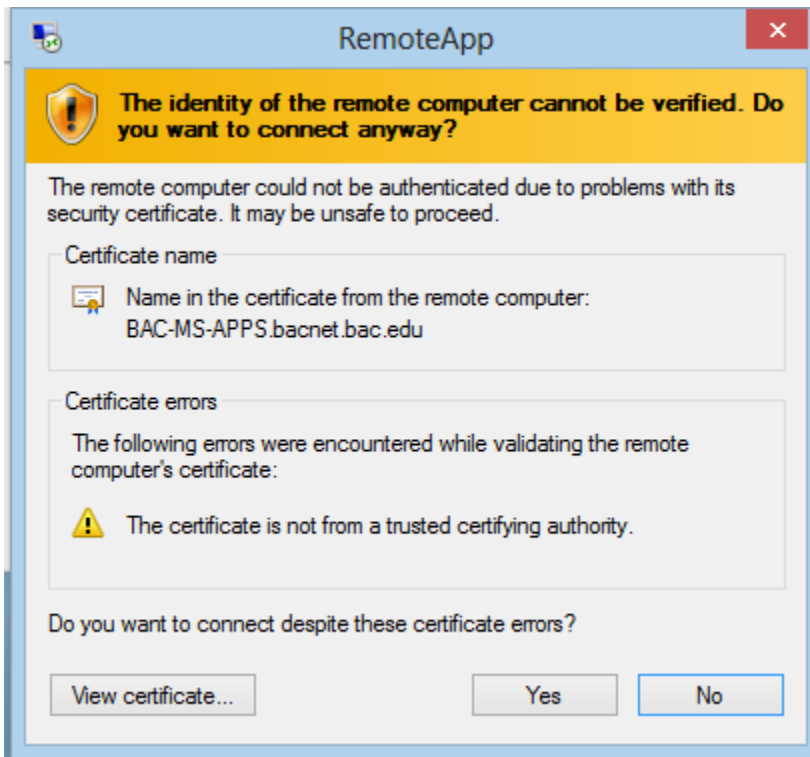
At this point, you can simply single-click on the icon of your choosing.

Belmont Abbey College
Information Technology Department

A connection box may show (as seen below) to verify your connection. Please click “Connect” to continue.



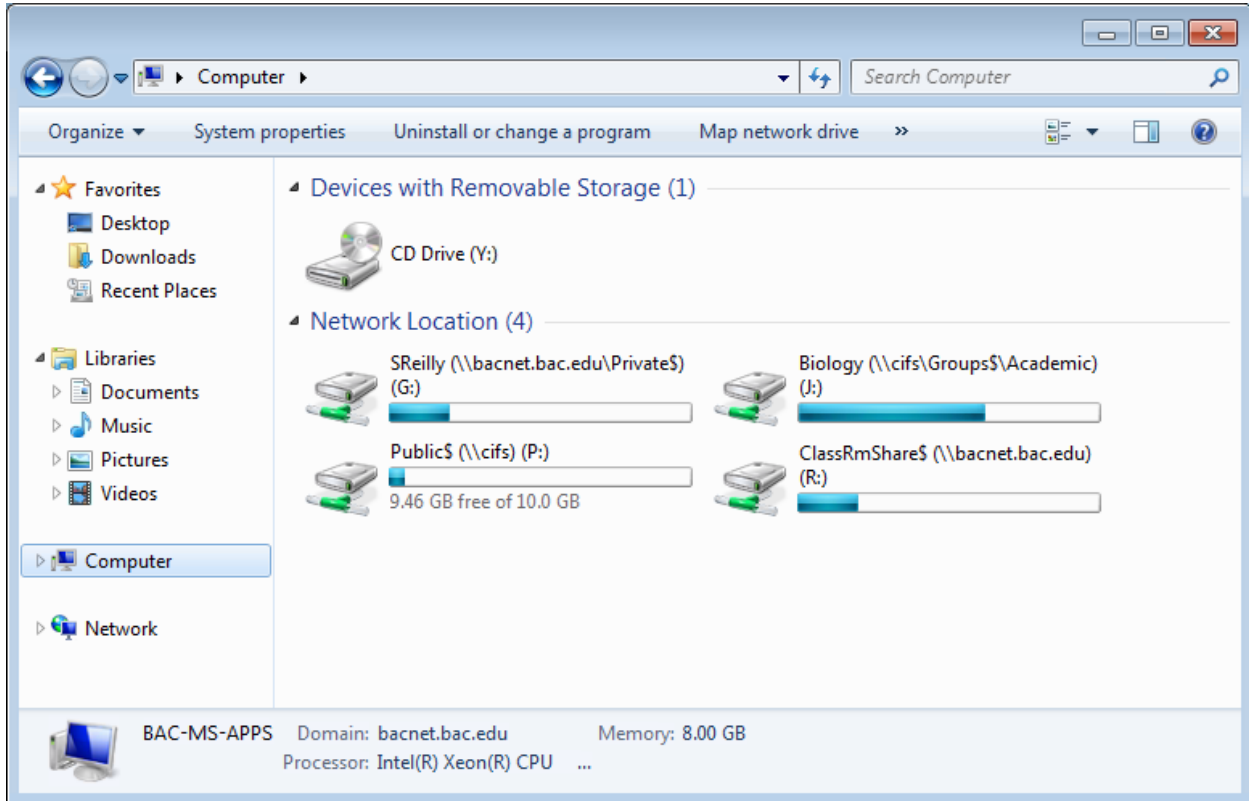
Because this is a remote solution, another verification box (shown below) checks the certificate credentials. Please select “Yes”.



Belmont Abbey College
Information Technology Department

If a remote application was selected, you should see that application start. Microsoft applications like MS Excel may take a moment before they start the first time.

If the Windows Explorer icon is chosen, you will receive a “My Computer” or Windows Explorer screen showing your mapped drives.



When you have completed your session, please make sure that you log out of the web browser session after closing all of the remote applications by selecting “Sign out”.

