

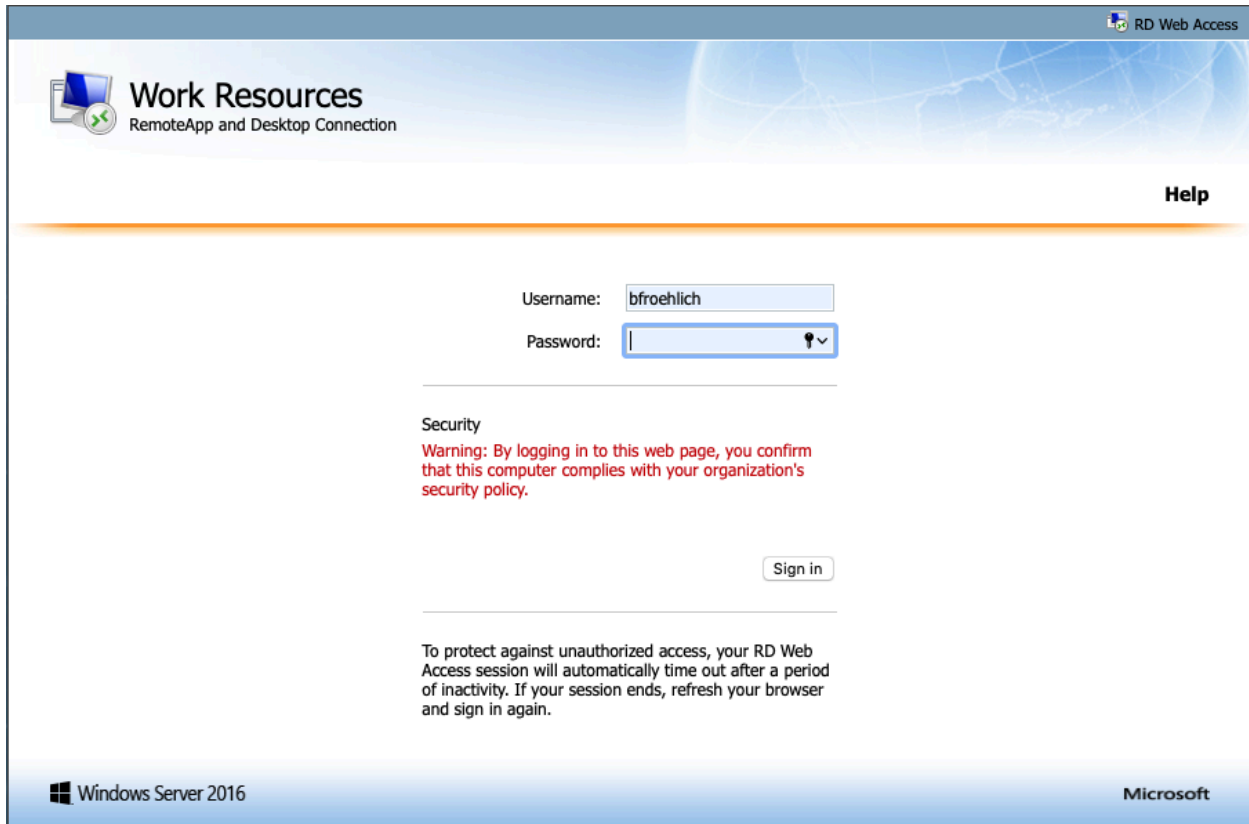
Belmont Abbey College

INFORMATION TECHNOLOGY DEPARTMENT

Accessing Belmont Abbey Files and Applications Remotely

Point your browser* to remote.bac.edu and login with your BACNET account

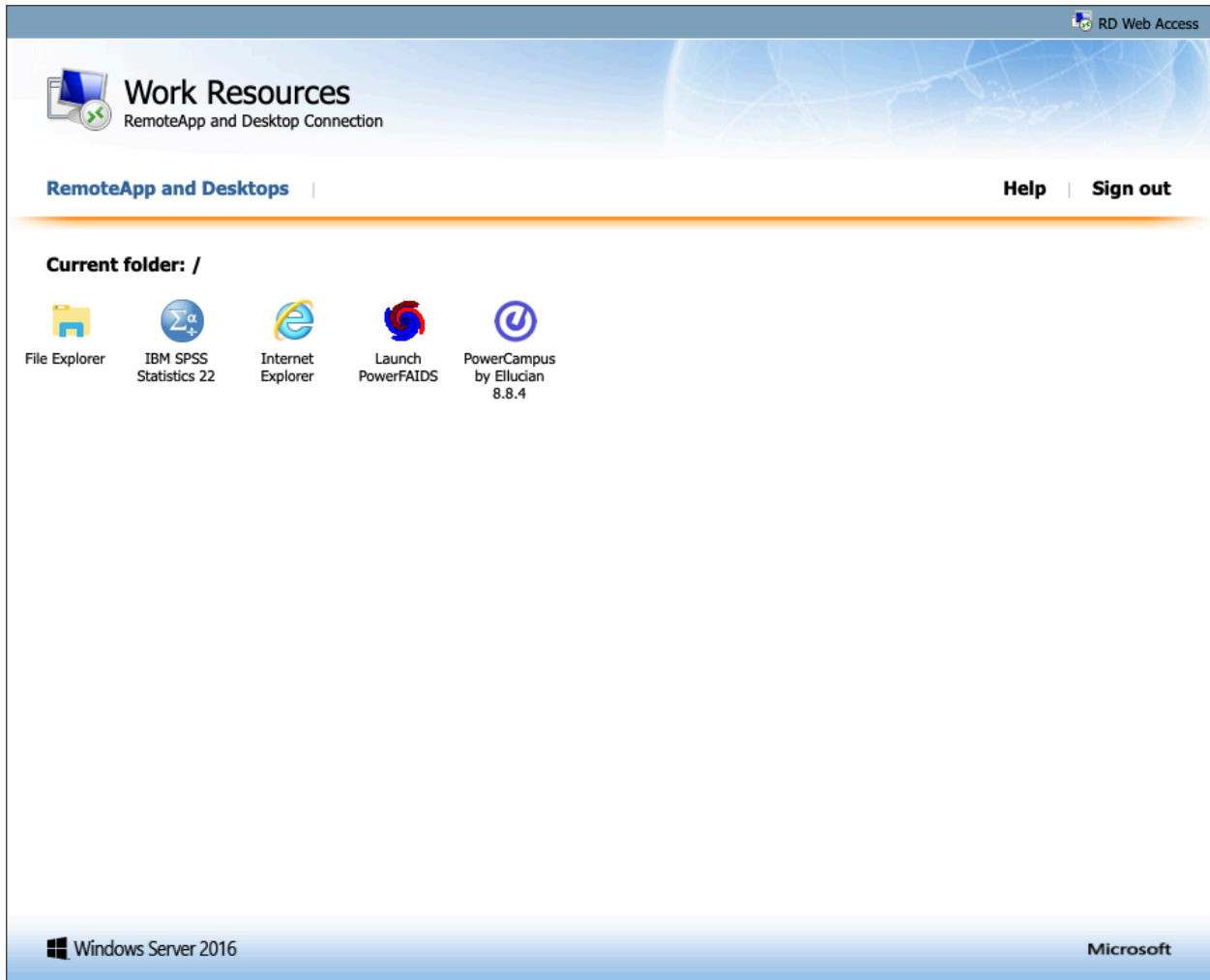
*this works best with Internet Explorer



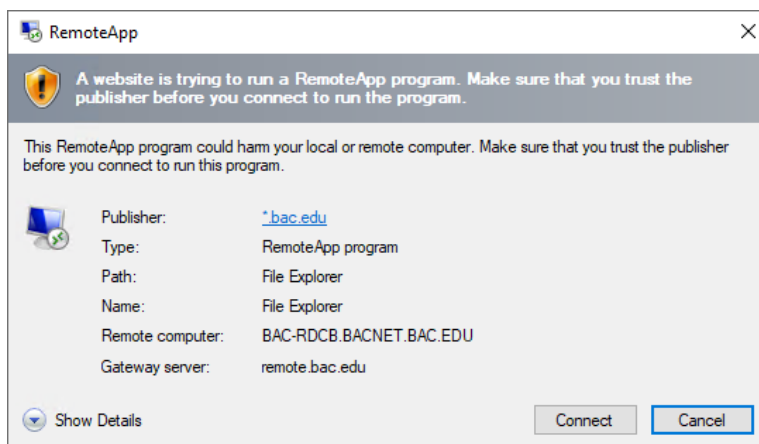
Click **Allow** if you see this message at the bottom of your screen



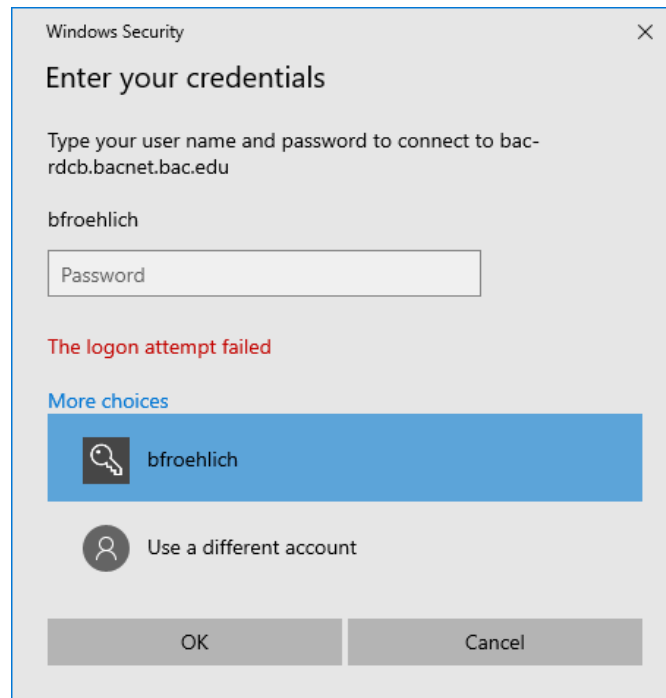
From here, you can select **File Explorer** if you simply want to access your drives. Otherwise, select an application to launch it



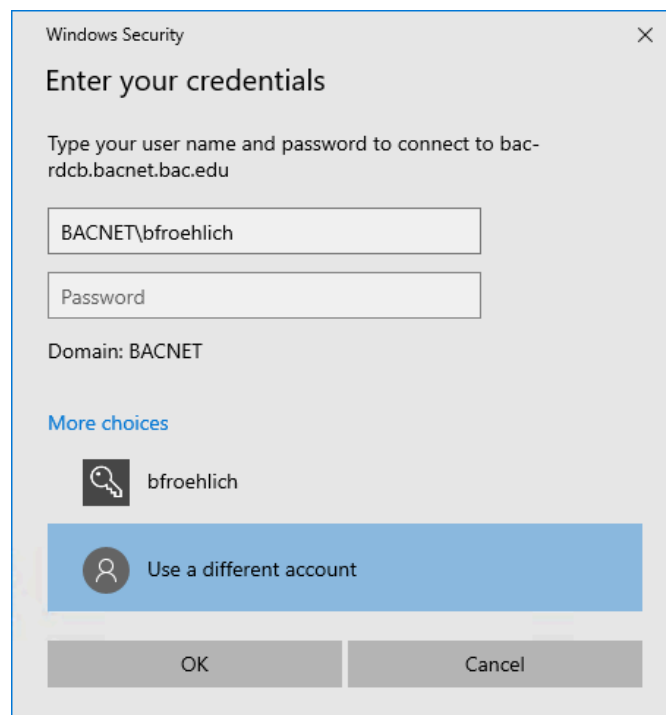
A connection box may show (as seen below) to verify your connection. Please click **Connect** to continue.



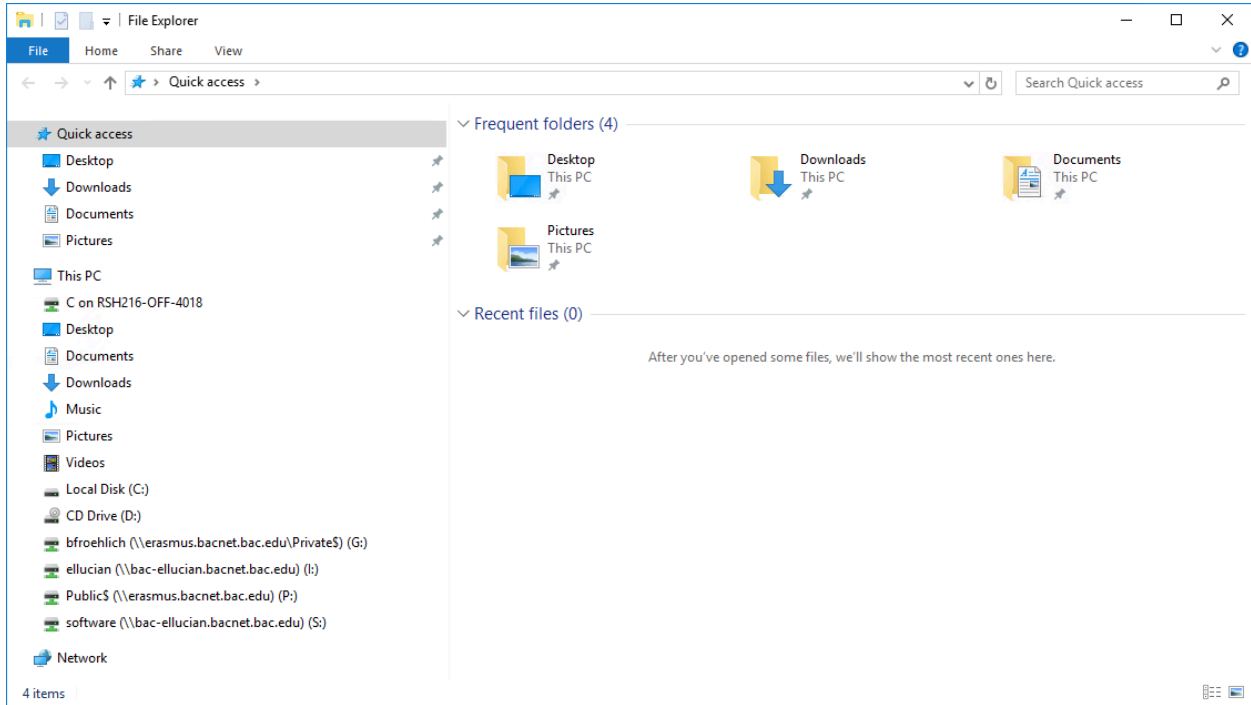
If you get the message **The logon attempt failed** then select **More choices**



And then re-enter your credentials, placing **BACNET** before your username, as seen below



If a remote application was selected, you should see that application start. Some applications like PowerCAMPUS may take a moment before they start for the first time. If the File Explorer icon is chosen, you will receive a **My Computer** or **File Explorer** screen showing your mapped drives.



TIP:

If you don't see anything launch after a thirty seconds, look at the bottom of your screen for a .rdp file that was downloaded, and then double-click to open

